

Rock Wool

Rock wool board with aluminum foil



Product Description

UET rock wool products are made of high quality basalt and dolomite. After melting at temperature above 1450°C, it is centrifuged at high speed using worldwide advanced four-axis centrifuge. Dimensions, while spraying a certain amount of binder, dustproof oil, water repellent and collecting by a cotton collector. Through the pendulum method, and three-dimensional method, curing, then cut to form rock wool products with various specifications and uses.

UET rock wool conforms to GB11835, GB50264, DL/T5072, domestic and international standards such as SH3010, ASTM C612 and JIS A9504, meet various performance testing requirements.

Applications

Thermal insulation, fire protection, sound absorption and noise reduction of storage tanks, containers and boiler conduit with -at or large diameter surfaces.

Specifications

Density in Kg/m ³	Dimension in mm		Facing	Thickness in mm
	Length	Width		
50-160	1200	600	FSK	30-150

*Standard widths are 600mm. For other sizes, please consult local representative. The material of the stitched net is galvanized mesh or stainless steel mesh. The common standard is 24# wire diameter with mesh diameter of 1" or 22# wire diameter wire mesh with a mesh diameter of 1".



Package Storage

For the convenience of construction, transportation, storage and identification, rock wool panel is wrapped in a heat shrink film. This product should be stored indoors or covered with a waterproof tarpaulin when stored

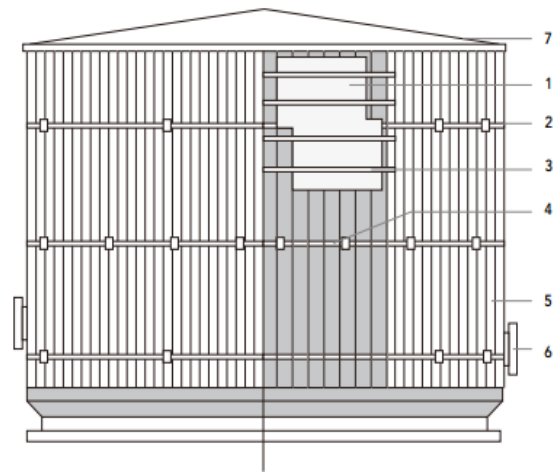
Construction Insulation

The rock wool panels must be seamlessly connected. All metal parts or equipment that need insulated must be kept dry if exposed to corrosive environments. Metal parts or equipment must be surface treated before insulation materials are installed.

In industrial insulation applications, metal coating must be insulated, such as aluminum or other metal materials that are difficult to combine with chemical reactions such as corrosion.

Fixing with metal plate screws or rivets at the longitudinal and round joints.

Sealants should be used at all joints to ensure good water tightness. Aluminum foil veneer is the preferred solution, joint longitudinal or cross joints are sealed with self-adhesive aluminum foil tape of width ≥ 75 mm. When insulation equipment temperature is lower than ambient temperature, there is a risk of condensation, and the insulation at this time must be equipped with a steam valve.



1. Industrial thermal insulation rock wool panel
2. Self-adhesive aluminum foil tape (weather resistant)
3. Self-adhesive aluminum foil tape
4. Support ring
5. Valve
6. Coating
7. Roof / wall connection

*For technical problems encountered during construction and installation, please contact our technical service team.

Technical Parameters

Parameter	RWBO-60	RWBO-80	RWBO-100	Unit	Standard	
Density	60	80	100	kg/m ³	GB/T 5480.3	
Thickness	30-150			mm	GB/T 5480.3	
Size	1200*600			mm	GB/T 5480.3	
Thermal Conductivity*	70°C	0.040	0.038	W/mk	GB/T 10294 GB/T 10296	
	100°C	0.046	0.042			
	150°C	0.050	0.048			
	200°C	0.064	0.056			
	250°C	0.076	0.063			
	300°C	0.080	0.070			
	350°C	0.077	0.077			
	400°C	0.085	0.085			
Recommended temperature*	450	650	650	°C	ASTM C411-05, ASTM C447-03, GB50264	
Maximum use temperature	550	750		°C	GB/T 17430, GB50264	
Surface burning characteristics	Flue gas development index	≤25			ASTM E84-10	
	Flame spread index	0			ASTM E84-10	
Combustion performance	Non-flammable, fire rating A1				GB 8624, EN13501-1, BS 476 Part4	
Volumetric hygroscopic rate	≤1%				ASTM C1104/1104M	
Mass hygroscopic rate	≤1%				ASTM C1104/1104M	
Drowning rate	Optional			ppm	GB/T 10299	
Chloride ion content*	Optional			ppm	GB/T 17393 ASTM C871-08	
Health and safety	Asbestos	No asbestos				HJ/T206, ISO 22262-1, NIOSH 9002
	Irritating odor	No irritating odor				ASTM C665-06
	Bacteria	No Bacteria				ASTM C1338-08
Standards compliant	GB 11835 * thermal insulation Rock wool, slag wool and products", GB 50264 "Design specifications for industrial equipment and pipeline insulation engineering ", ASTM C547 type I & II "Standards for the insulation of mineral fiber tubes", JIS A9504 "Insulation Materials of artificial mineral fibers", SH3010 "Technical Specifications for Petrochemical Equipment and Pipeline Insulation", DL/T 5072 "Design Rules for Thermal Insulation Paints for Thermal Power Plants"					

Remark 1

Thermal conductivity*: The thermal conductivity value of the series is calculated as the average temperature and comply with the relevant provisions of the GB/T 10294 standard “thermal insulation determination of steady-state thermal resistance and related properties-guarded hot plate apparatus”.ASTM C177 and GB/T 10294 test methods and judgment standards are slightly different, and the test results are different.

Recommended temperature*: The recommended temperature is based on the maximum operating temperature test result minus 100 °C.

Chloride ion content*: Low chlorine can be achieved ≤ 10 ppm. If you have low chlorine demand, you can contact the Rockwool business representative.

Remark 2

The relevant information in this technical data sheet only indicates the accuracy of the date of publication, In addition to the conditions specified in this data sheet, our company will not assume any responsibility for the use of the series of products.



HEBEI UNITED ENERGY TECH CO., LTD
B-510 WANDA PLAZA, GUANGYANG DISTRICT,
LANGFANG CITY, 065000 CHINA

UNITED INSULATION LIMITED
ROOM 1103, HANG SENG MONGKOK BUILDING, 677
NATHAN ROAD, MONGKOK, KOWLOON HK